



GENIE[®] 123

Supreme Membrane Separator



The original brand known for sample conditioning and analyzer protection!

The Supreme 100 Series™ remove 100% of entrained liquid and particulate in gas samples, which allow only gas sample to flow to analyzers. This action protects analyzers and other sampling components against liquid damage. The Genie[®] Supreme Series™ 100 models can accommodate a wide range of applications just as the original Genie[®] Series 100 Membrane Separators™, yet they offer an improved housing design for easy maintenance and the innovative Liquid Block Technology™ that prevents liquid from being forced across the membrane should sample line pressure conditions become upset. Genie[®] Supreme Series Membrane Separators™ are safe and easy to install and maintain, especially in densely populated cabinets.

The Model 123 is ideal for applications requiring higher flow rates or larger quantities of liquid than the Genie[®] Supreme Model 120 can withstand. It offers a 2" diameter membrane, the same membrane cross sectional area as the original Genie[®] Model 130 or Genie[®] Model 130M, and is ideal for removing unintermitted liquid flow from gas samples. It is also perfect for protecting components such as on-line analyzers, gas chromatographs, or mass spectrometers. Additional information such as FAQs is available.

Technical Specifications

Maximum pressure rating	2,000 psig (137.9 barg)
Maximum Liquid Block™ valve auto-reset pressure	2,000 psig (137.9 barg) Slowly open the supply pressure so that the minimum differential pressure required to shut off the Liquid Block™ is not met or exceeded.
Maximum temperature <small>*Actual limit depends on sealing material chosen. Refer to Temperature Range Comparison Chart.</small>	Type 6 membrane: 185°F (85°C) *Type 7 membrane: 300°F (149°C)
Maximum Recommended Flow Rate <small>Results in approx. 2 PSI pressure differential. For higher flow rates, contact the factory.</small>	Type 6 Best Rejection: 5.4 SLPM (11.4 SCFH) Type 7 Highest Temps: 7.1 SLPM (15.0 SCFH)
Bypass flow rates	Requirement varies with application
Port sizes	Inlet, Outlet, & Bypass: 1/4" female NPT
Internal volume <small>Listed with and without Liquid Block™ respectively</small>	Total: 9.1 cc, 10.3 cc Upstream of membrane: 5.4 cc, 5.4 cc Downstream of membrane: 3.7 cc, 4.9 cc
Wetted materials	Machined parts: 316/316L stainless steel / ISO 15156-3 compliant All other metal parts: stainless steel / ISO 15156-3 compliant Sealing material: User defined Membrane: Inert

Product Brief

Applications

- Protection against liquids
 - On-line and portable analyzers
 - GC's, Mass Specs, O₂, H₂S, Moisture, and others
- Spot, composite, or continuous gas sampling in any process industry including natural gas, petrochemical, and oil refining
- Gas sample conditioning

Benefits

- Helps preserve sample integrity
- Superior analyzer protection
- Quick and easy to install and maintain
- Quick and easy membrane inspection
- Economical

Features

- Genie[®] Membrane Technology™
- Liquid Block™ option
- Low internal volume
- Straight through Bypass
- Built-in membrane retention
- Threaded housing cover
- All connection ports on the housing
- Back mounting

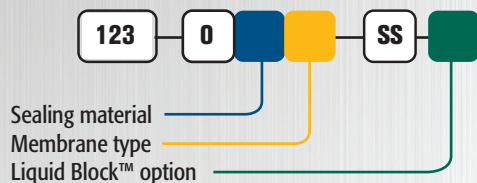


Model Numbering & Additional Part Numbers

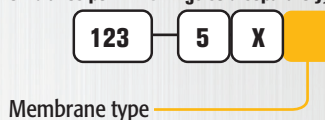
Your model number is determined by your specific needs. Choose options below.

Sealing material	0 = fluoroelastomer	1 = perfluoroelastomer	J = RGD resistant HNBR	(other materials available)
Membrane type	6 = Better Rejection; Rejects ALL types of liquids from vapor 7 = Highest Temps; Rejects ONLY high surface tension liquids			
Liquid Block™ option	Blank = No Liquid Block™ option	LB = Liquid Block™ option *	*May be restrictive for vacuum service	
Mounting bracket accessory	Part # 123-509-SS (sold separately)			

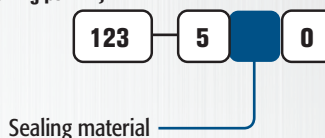
How to build the model number:



How to build the replacement membrane kit number: (Five membranes per kit. O-rings sold separately)

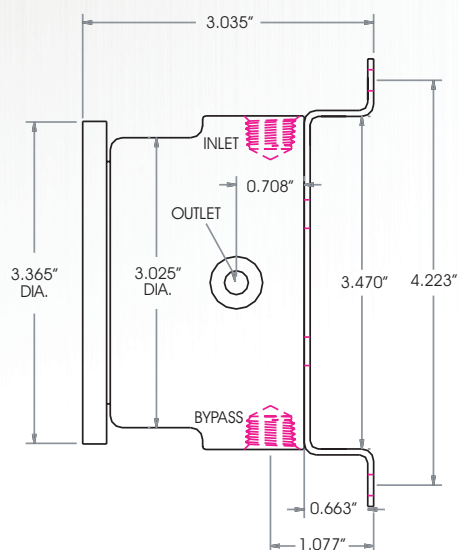


How to build the replacement sealing material number: (One o-ring per kit.)

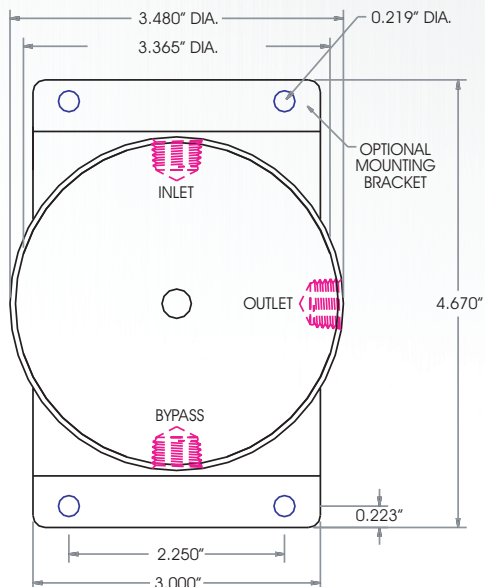


Dimensions

Side View



Front View



Analytically Correct™ sample systems, sample conditioning components, and revolutionary gas and liquid sampling technology.



4, rue des Roses - 69280 SAINTE-CONSORCE - France
Tel: +33 478 878 945 - info@soclema.com - www.soclema.com