



41041 Black Bayou Rd, Gonzales, Louisiana, USA 70737  
Phone (225) 644-5255 FAX (225) 644-3975  
www.geniefilters.com sales@geniefilters.com

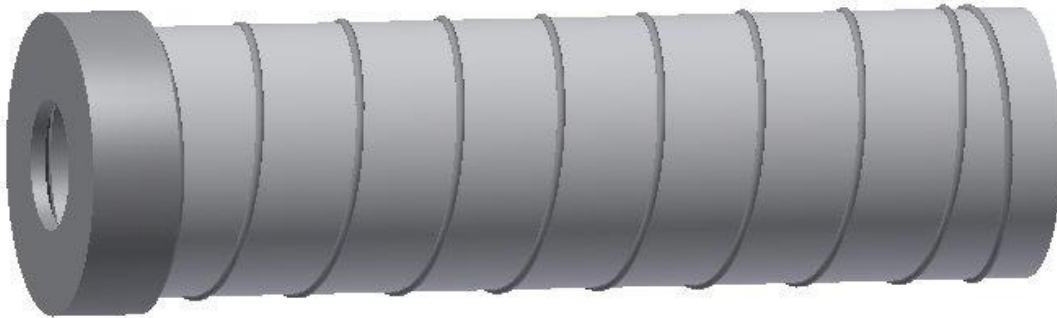
## GP Complete Membrane Assembly Instructions

### Tools & Materials

Quantity & Description
------------------------

<input type="checkbox"/> 3/16" allen wrench (qty 1)
---

### Completed Product



Talsico® Process Picture Maps™ and all associated intellectual property are owned by Talsico International, ABN 20 419 167 619, and subject to licensing agreement. Duplication or use of this methodology or format is prohibited without the written permission of Talsico. [www.talsico.com](http://www.talsico.com)

Revision: 8-14-13

This document is to be considered "FOR REFERENCE ONLY" when printed as a hardcopy.  
The revision status must be verified prior to use.

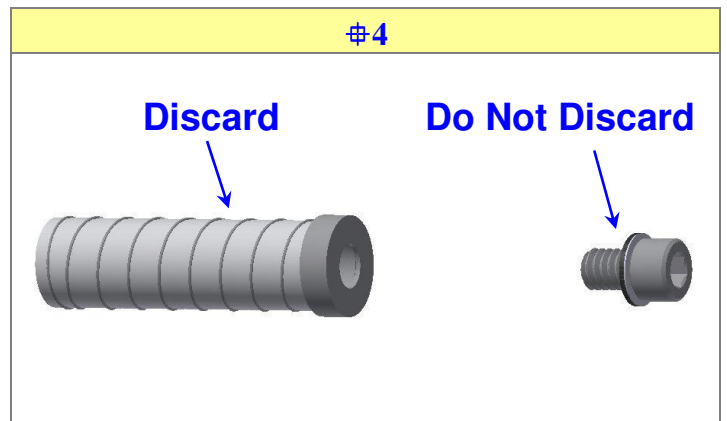
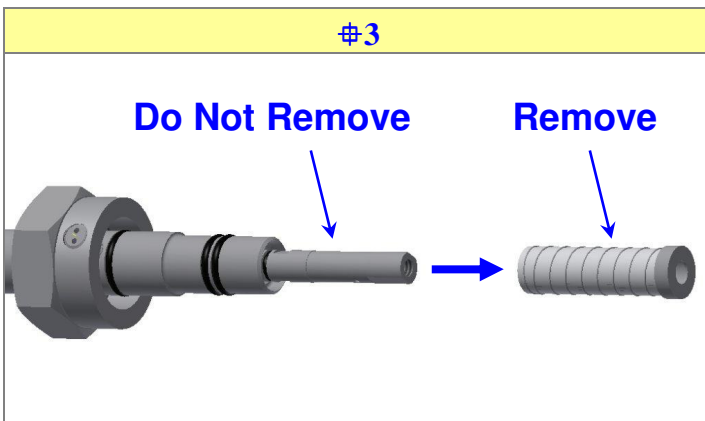
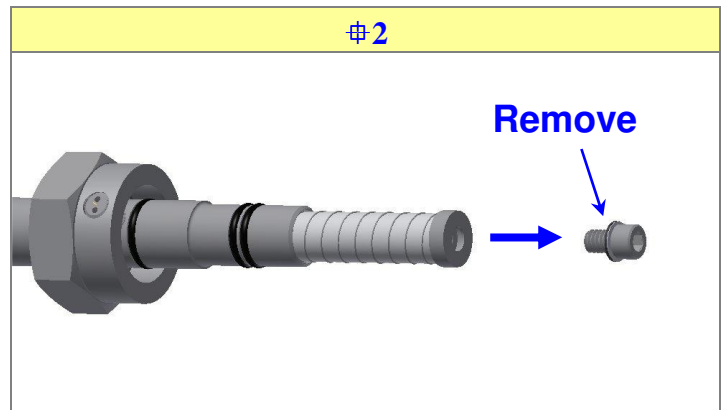
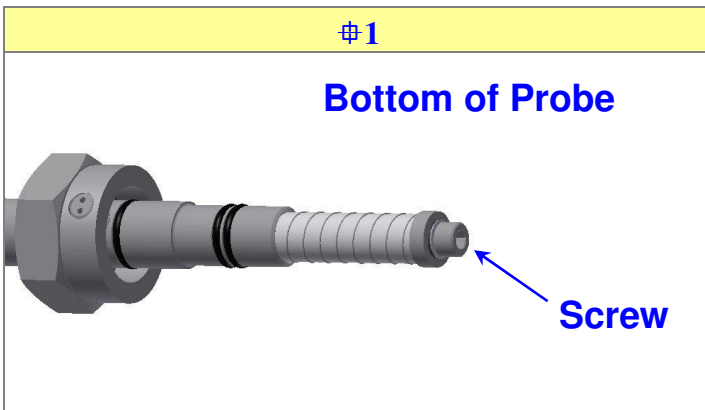
Approval: RMB

File Name & Path: H:\Product Improvement Technical Service\Special Procedures\GP - CMA (Complete Membrane Assembly).doc


## Overview Instructions & Explanations

### 1 Removing the old membrane assembly

- 1.1 Use a 3/16" allen wrench to remove the screw from the bottom of the probe #1 #2
- 1.2 Replace the Teflon and rubber gaskets on the screw with the ones supplied in the kit. **Be sure to place the Teflon gasket on first before the rubber gasket.**
- 1.3 Discard the old gaskets
- 1.4 DO NOT discard the screw with new gaskets
- 1.5 Pull the membrane assembly components from the bottom of the probe. #3
- 1.6 DO NOT unscrew the probe support (for GP & GPiL models) or the cartridge (for GPR & GPRiL models) #3
- 1.7 Keep the screw with Teflon and rubber gaskets #4
- 1.8 Discard the old membrane assembly components #4



## 2 Installing the new membrane assembly

- 2.1  Hands must be clean prior to handling membrane assembly.
  - Normal oils from your skin as well as lotions, grease, or other chemicals can damage the membrane.
- 2.2 Remove the new membrane assembly from its packaging
- 2.3 Unscrew the white plastic wing nut and discard the white plastic wing nut, white plastic bolt, and both white plastic washers #5 #6
- 2.4 Slide the membrane assembly around the probe support or cartridge and gently insert it into the bottom of the probe. #7
  - Be sure the end of the membrane tucks into the bottom of the probe. DO NOT tear the membrane.
- 2.5 Use a 3/16" allen wrench to install the original bottom screw with Teflon and rubber gaskets in the bottom of the probe. #8
  - The components should be tightened to a torque value of 10 in-lbs.

