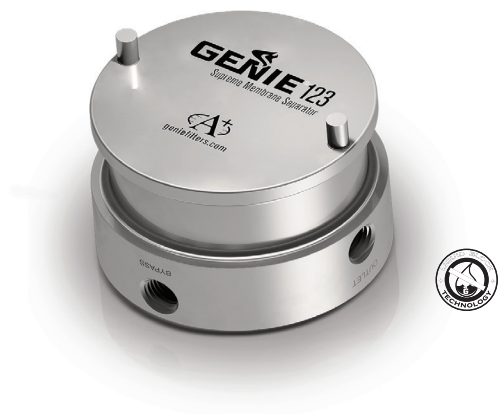


Genie[®] Supreme™ Model 123 Installation & Operation Instructions



Manufacturing Contact Information

A+ Corporation, LLC *Call for expert product application assistance:*
41041 Black Bayou Rd. Phone: (225)-644-5255 Website: www.geniefilters.com
Gonzales, LA 70737 Fax: (225)-644-3975 E-mail: sales@geniefilters.com

Safety Warnings

- ⚠ Failure to abide by any of the safety warnings below may result in equipment failure and serious injury or death.
 - ▶ Valve off the sample flow before installation.
 - ▶ Do not exceed any equipment pressure ratings.

Application Note

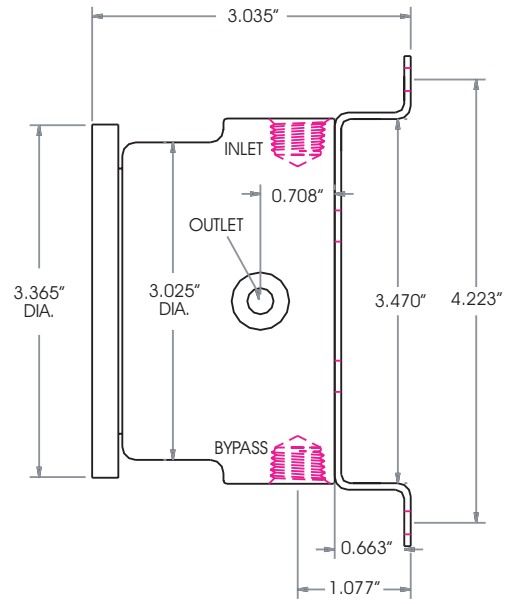
- ▶ To achieve the maximum recommended flow rate through a Genie 123 with the Liquid Block option, at least 30 psi of pressure difference is required between the inlet and outlet ports if the Genie contains a Type 6 membrane, or at least 5 psi for a Type 7.

Tools Required

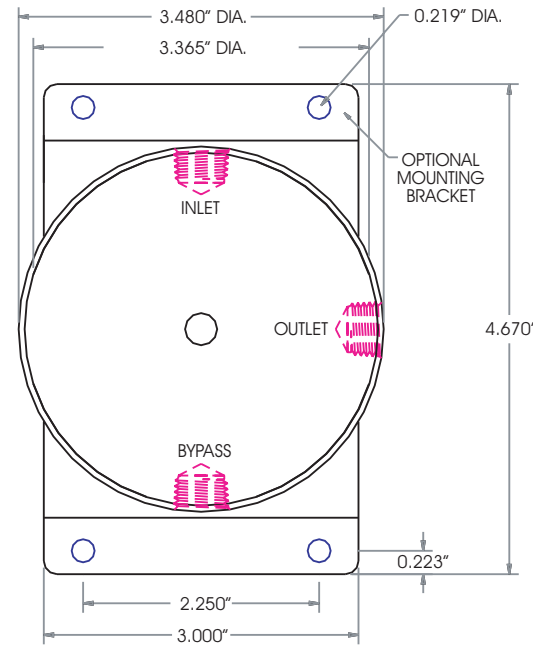
- ▶ Four #10 screws for mounting bracket to panel.
- ▶ Screwdriver for mounting bracket to panel.

Dimensions

Side View



Front View



Mounting Instructions Without Optional Bracket

Note: Separate instructions for mounting using the optional bracket will be included with bracket. The **Genie[®] Supreme™** is designed to be back mounted to hold it stationary for quick and easy servicing. The optional bracket makes installation easier. The **bypass port** must face downward for the **Genie[®]** to function properly.

Step 1. Position the Genie[®] on the panel

- ▶ Position the **Genie[®]** so that the final position of the **bypass port** will be facing downward. **Bypass port** positioning is important for draining the rejected liquids.

Step 2. Mount

- ▶ Affix the **Genie[®]** to the panel surface.
- ▶ Fasten the **Genie[®]** to the panel using two ¼" diameter screws.

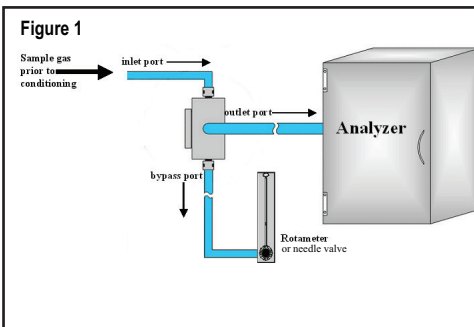
Installation Instructions

Step 1. Depressurize the system

- ▶ Valve off the sample flow prior to installation of the **Genie[®] Supreme Membrane Separator™**
- ▶ If the supply pressure is above the **Genie[®] maximum recommended supply pressure** or above the pressure rating of any component in the sample system, then a pressure regulator should be installed upstream of that component before the sample flow is started.

Step 2. Connect the Genie[®]

- ▶ The **Genie[®]** ports are labeled **inlet**, **outlet**, and **bypass**. Connect tubing from the sample stream to the **Genie[®] inlet port**. The **bypass port** must be facing downward for the **Genie[®]** to function properly (Figure 1).
- ▶ Connect tubing from the **Genie[®] outlet port** to the analyzer or next device in the sample system. The **Genie[®]** should be located as close to the analyzer as possible to prevent the sample gas temperature from decreasing; otherwise, condensation could occur downstream of the **Genie[®]** and the sample integrity would be affected.
- ▶ Connect the **Genie[®] bypass port** to a throttling valve. A rotameter containing a valve may be installed at the **bypass port**, but only if the **inlet port** pressure is below the rotameter pressure rating. The **bypass port** allows rejected liquid and particulate to be drained. Do not plug the **bypass port** or leave it open to the atmosphere.



Maintenance Note

Note: **Genie[®] Supreme Membrane Separators™** are virtually maintenance free. On occasion, the membrane and o-rings will need replacing. Replacement instructions are shipped with replacement membrane and o-ring parts.

Operating Instructions

Note: The distance between the **Genie[®]** and the analyzer should always be minimized. If the sample dewpoint is typically above ambient temperature, then heat tracing may also be required in order to maintain sample integrity. Equations of state software is available to aid in representative sampling by simulating sampling conditions and determining if composition changes occur.

Step 1. Getting started

- ▶ Establish the minimal **bypass** port flow that will bring fresh sample quickly yet allow for continuous removal of separated liquids.
- ▶ For models containing Liquid Block™: Slowly open the supply pressure so that the minimum differential pressure required to shut-off the Liquid Block™ is not met or exceeded..

Step 2. Points to consider during operation

- ▶ Avoid “blowing down” the sample from the **bypass port**; otherwise, the **inlet** port pressure may drop below the **outlet** port pressure resulting in internal reverse flow.
- ▶ Maintain the lowest possible **inlet port** sample pressure consistent with good overall system operation in order to prevent excessive membrane differential pressure.
- ▶ Maintain the sample flow rate through the **Genie[®] outlet port** below the **maximum recommended flow rate**. When the flow rate is below the maximum recommended, then the **membrane differential pressure** will typically be below 2 psi, providing that all of the membrane area is available for flow. Accumulation of liquid or particulate on the membrane surface could decrease the membrane area available for gas flow, which would result in an increase of **membrane differential pressure**. Very few liquid components will flow through the membrane when the **membrane differential pressure** is below 2 psi. Some applications allow for a much higher **membrane differential pressure**.

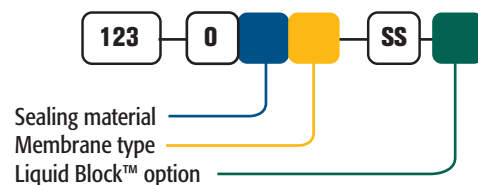
Model Numbering & Additional Part Numbers

Model Numbering & Additional Part Numbers

Your model number is determined by your specific needs. Choose options below.

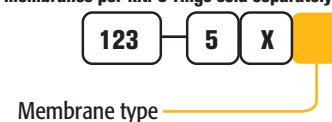
Sealing material	0 = fluoroelastomer	1 = perfluoroelastomer	J = RGD resistant HNBR	(other materials available)
Membrane type	6 = Better Rejection; Rejects ALL types of liquids from vapor 7 = Highest Temps; Rejects ONLY high surface tension liquids			
Liquid Block™ option	Blank = No Liquid Block™ option		LB = Liquid Block™ option *	*May be restrictive for vacuum service
Mounting bracket accessory	Part # 123-509-SS (sold separately)			

How to build the model number:



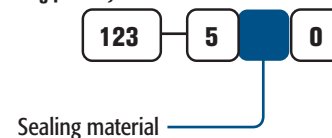
How to build the replacement membrane kit number:

(Five membranes per kit. O-rings sold separately)



How to build the replacement sealing material number:

(One o-ring per kit.)



4, rue des Roses - 69280 SAINTE-CONSORCE - France
Tel: +33 478 878 945 - info@soclema.com - www.soclema.com